

# ROMAN RELIGION

# ROMAN EQUIVALENTS

- ABSORBED MANY RELIGIONS
- MOST INFLUENTIAL WAS THE GREEKS



# ROMAN EQUIVALENTS



# ROMAN EQUIVALENTS

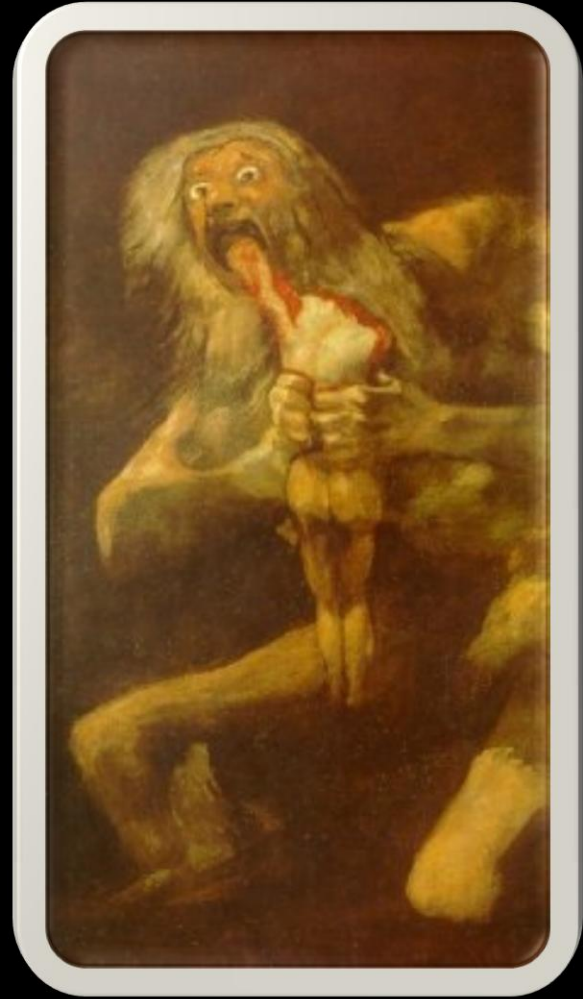


Neptune

Neptunus



# ROMAN EQUIVALENTS



# ROMAN EQUIVALENTS



# THE BIG THREE

- THE BIG THREE FOR GREECE:  
ZEUS,  
POSEIDON,  
HADES
- THE BIG THREE FOR ROME:  
JUPITER,  
JUNO,  
MINERVA
- JANUS WAS SIGNIFICANT BECAUSE OF THE ATTACK OF THE GAULS
- A GOOSE SAT ON THE TEMPLE OF JANUS AND ALERTED THE ROMANS OF ALL SNEAK ATTACKS

# EARLY BEGINNINGS...

- ROMANS BELIEVED IN PRIMORDIAL GODS
- VERY, VERY POWERFUL
- ROMULUS AND REMUS FOUNDED THE CITY

## EARLY BEGINNINGS...

- AENEAS WAS A HERO OF THE TROJAN WAR
- SETTLED IN ITALY
- HAD SON AMULIUS
- AMULIUS MARRIED RHEA SILVIA

# EARLY BEGINNINGS...

- RHEA SILVIA WAS VESTIAL VIRGIN AND WAS RAPED BY THE GOD MARS
- NUMITOR SENT THE TWINS TO DIE
- MARS SENT A WOLF TO RAISE AND PROTECT THE TWINS

# ROMAN WORSHIP

- RELATIONSHIP BETWEEN ROMANS AND GODS WAS NOT BEHAVIORAL
- NEEDED TO FOLLOW PROPER RITUAL AND TRIBUTE
- SACRIFICES SMALL TO LARGE

# ROMAN WORSHIP

- PRAYERS WERE TO HONOR, BUT ALSO LIKE A CONTRACT
- IF A ROMAN WOULD PRAY FOR SOMETHING AND IT CAME TRUE, THEY MUST FOLLOW UP WITH THEIR PROMISE

# ROMAN WORSHIP

- DISOBEYING THE GODS WAS NOT JUST A 'SIN,' BUT IN SOME CASES AGAINST THE LAW
- RELIGION WAS INTERTWINED WITH THE GOVERNMENT
- 2 TYPES OF PRIEST: AUGURIES AND COLLEGE PONTIFICATION